

# GENUINE MOTORCYCLE ACCESSORIES

B2B Catalog | 2020



# MAKE YOUR ROYAL ENFIELD TRULY YOURS

A range of Genuine Motorcycle Accessories, designed to fit and built for purpose.  
Rigorously tested in real road conditions, they add protection, comfort and utility to turn each ride into a story.



## DESIGNED IN UK

Conceptualised and developed at our state-of-the-art UK Tech Centre



## SEAMLESS INTEGRATION

Engineered to fit perfectly and easily to your Royal Enfield



## RIGOROUS TESTING

Tested on real road conditions for quality and durability



## GENUINE ACCESSORIES

Royal Enfield branding as a mark of assured quality



## ASSURED WARRANTY

2-years worry-free warranty for complete peace of mind



# INDEX

<b>CATEGORY</b>	<b>PAGE NO.</b>
Protection .....	01-18
Seats.....	19-27
Body Work .....	28-48
Controls.....	49-55
Security And Maintenance.....	56-59
Engine .....	60-67
Luggage.....	68-78



**PROTECTION**

# LARGE ENGINE GUARD

DMS Ordering Part Number - 1760144/C

Kit Number - 1990427

Material - Mild Steel

Colour - Black

Compatible Platform/s - Interceptor and Continental GT

Fitting Time - 15 mins



Engine protection guards fabricated from 25mm steel tube. Guards are black powder coated for corrosion resistance and durability. Fitment enhances bike appearance while adding a layer of protection. Royal Enfield branded.

# LARGE ENGINE GUARD

**DMS Ordering Part Number** - 1760095/D

**Kit Number** - 1990407

**Material** - Stainless Steel

**Colour** - Silver

**Compatible Platform/s** - Interceptor and Continental GT

**Fitting Time** - 15 mins



Engine protection guards fabricated from 25mm stainless steel tube for corrosion resistance and durability. Fitment enhances bike appearance while adding a layer of protection. Royal Enfield branded.

# COMPACT ENGINE GUARD

DMS Ordering Part Number - 1760099/D

Kit Number - 1990408

Material - Mild Steel

Colour - Black

Compatible Platform/s - Interceptor and Continental GT

Fitting Time - 15 mins



Engine protection guards fabricated from 25mm steel tube. Guards are black powder coated for corrosion resistance and durability. Stealth fitment adds a discrete layer of protection. Royal Enfield branded.

# COMPACT ENGINE GUARD

**DMS Ordering Part Number** - 1760097/D

**Kit Number** - 1990406

**Material** - Stainless Steel

**Colour** - Silver

**Compatible Platform/s** - Interceptor and Continental GT

**Fitting Time** - 15 mins



Engine protection guards fabricated from 25mm stainless steel tube for corrosion resistance and durability. Stealth fitment adds a discrete layer of protection. Royal Enfield branded.



# OCTAGON ENGINE GUARD

**DMS Ordering Part Number** - 1760063/D

**Kit Number** - 1990601

**Material** - Mild Steel

**Colour** - Black

**Compatible Platform/s** - Classic 350, Classic 500, Electra 350,  
Bullet 350, Bullet 500, Trials 500

**Fitting Time** - 20 mins



Engine protection guards fabricated from 32mm steel tube.  
Guards are black powder coated for corrosion resistance and durability.  
Fitment enhances bike appearance while adding a layer of protection.

# OCTAGON ENGINE GUARD

**DMS Ordering Part Number** - 1760060/E

**Kit Number** - 1990634

**Material** - Stainless Steel

**Colour** - Silver

**Compatible Platform/s** - Classic 350, Classic 500, Electra 350,  
Bullet 350, Bullet 500, Trials 500

**Fitting Time** - 20 mins



Engine protection guards fabricated from 32mm stainless steel tube.  
Stainless Steel guards are corrosion resistant and durable.  
Fitment enhances bike appearance while adding a layer of protection.

# TRAPEZIUM ENGINE GUARD

DMS Ordering Part Number - 1760064/D

Kit Number - 1990602

Material - Mild Steel

Colour - Black

Compatible Platform/s - Classic 350, Classic 500, Electra 350,  
Bullet 350, Bullet 500, Trials 500

Fitting Time - 20 mins



Engine protection guards fabricated from 32mm steel tube. Guards are black powder coated for corrosion resistance and durability. Fitment enhances bike appearance while adding a layer of protection.

# TRAPEZIUM ENGINE GUARD

**DMS Ordering Part Number** - 1760061/E

**Kit Number** - 1990635

**Material** - Stainless Steel

**Colour** - Silver

**Compatible Platform/s** - Classic 350, Classic 500, Electra 350,  
Bullet 350, Bullet 500, Trials 500

**Fitting Time** - 20 mins



Engine protection guards fabricated from 32mm stainless steel tube. Stainless Steel guards are corrosion resistant and durable. Fitment enhances bike appearance while adding a layer of protection.

# COMPACT ENGINE GUARD

**DMS Ordering Part Number** – 1760155/A

**Kit Number** – 1990687

**Material** – Stainless Steel

**Colour** – Silver

**Compatible Platform/s** – Classic 350, Classic 500, Electra 350, Bullet 350, Bullet 500, Trials 500

**Fitting Time** – 15 mins

**Note:** To allow fitment of Compact Engine Guard, the standard gear shifter has to be replaced with part number KLA00014/A. This part is available in Royal Enfield Spares.



Engine protection guards fabricated from 22mm stainless steel tube for corrosion resistance and durability. Stealth fitment adds a discrete layer of protection. Royal Enfield branded.

# LARGE ENGINE GUARD

DMS Ordering Part Number - 888529

Kit Number - 1990205

Material - Mild Steel

Colour - Black

Compatible Platform/s - Himalayan (All)

Fitting Time - 20 mins



Engine protection guards fabricated from 22mm steel tube. Guards are black powder coated for corrosion resistance and durability. Fitment enhances bike appearance while adding a layer of protection.

# ALUMINIUM SUMP GUARD

**DMS Ordering Part Number** - 1760128/C

**Kit Number** - 1990677

**Material** - Aluminium

**Colour** - Silver

**Compatible Platform/s** - Classic 350, Classic 500, Electra 350,  
Bullet 350, Bullet 500, Trials 500

**Fitting Time** - 15 mins



Brushed Aluminium Sumpguard, adds a discrete layer of protection from stones and debris.  
Does not fit with Airfly, Trapezium or Octagon engine guards.

# ALUMINIUM SUMP GUARD

**DMS Ordering Part Number** - 1760111/B

**Kit Number** - 1990423

**Material** - Aluminium

**Colour** - Silver

**Compatible Platform/s** - Interceptor and Continental GT

**Fitting Time** - 45 mins



Aluminium Sumpguard, adds a discrete layer of protection from stones and debris.



# HEADLIGHT GRILL

**DMS Ordering Part Number** - KXG00019/C

**Kit Number** - 1990664

**Material** - ABS

**Colour** - Black

**Compatible Platform/s** - Classic 350, Classic 500, Electra 350,  
Bullet 350, Bullet 500, Trials 500

**Fitting Time** - 20 mins



Robust injection molded headlight grill to customise the headlight and provide additional protection from debris.

\*Not Homologated

# FORK GAITER KIT

**DMS Ordering Part Number** - 1760101/C

**Kit Number** - 1990405

**Material** - Rubber

**Colour** - Black

**Compatible Platform/s** - Interceptor and Continental GT

**Fitting Time** - 45 mins



Fork Gaiters add additional protection to forks stanchions from stones and debris.

# MASTER CYLINDER GUARD, REAR, SILVER

DMS Ordering Part Number - 1760146/D

Kit Number - 1990219

Material - Aluminium

Colour - Silver

Compatible Platform/s - Himalayan

Fitting Time - 5 mins



Robust aluminum anodized for enhanced durability and impact protection.  
Safeguards vulnerable braking components.

# OIL COOLER GUARD, ALUMINIUM, SILVER

DMS Ordering Part Number - 1760114/E

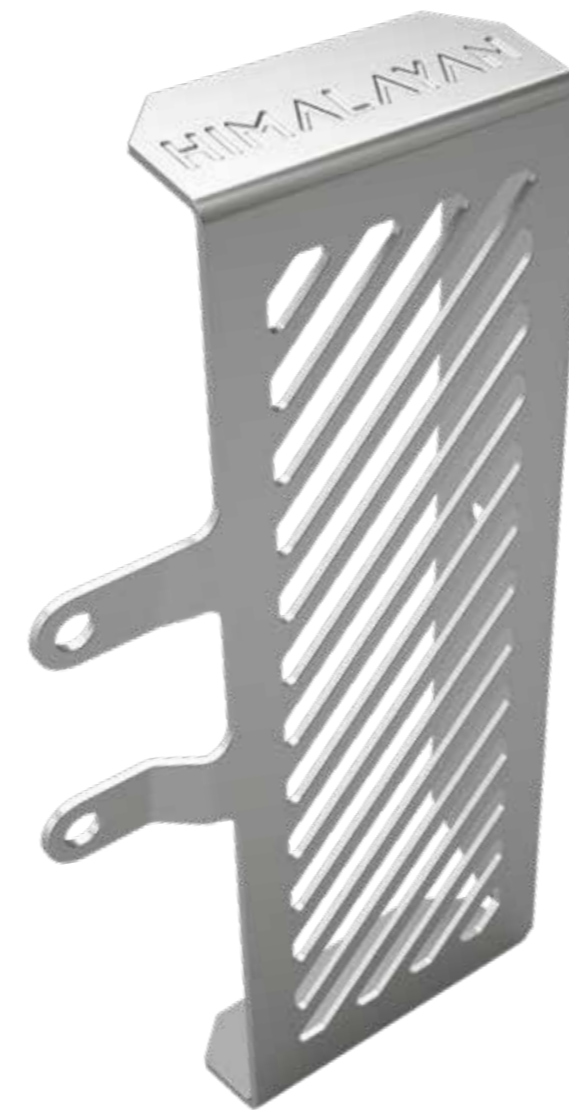
Kit Number - 1990216

Material - Aluminium

Colour - Silver

Compatible Platform/s - Himalayan

Fitting Time - 5 mins



Robust stamped aluminium radiator guard offering additional protection from stones and debris while maintaining vital radiator air flow. With subtle Royal Enfield branding.

# COMPACT ENGINE GUARD, BLACK

DMS Ordering Part Number - KXG00016C

Kit Number - 1990204

Material - Mild Steel

Colour - Black

Compatible Platform/s - Himalayan

Fitting Time - 15 mins



Engine protection guards fabricated from 22mm steel tube. Guards are black powder coated for corrosion resistance and durability. Stealth fitment adds a discrete layer of protection.

# SEATS

RE TOURING



# TOURING DUAL SEAT

**DMS Ordering Part Number** - KXH00010/A

**Kit Number** - 1990404

**Material** - Embossed Vinyl

**Colour** - Black

**Compatible Platform/s** - Interceptor

**Fitting Time** - 10 mins



Increased seat comfort for both rider and passenger from the addition of 3D netting. Rider standover height is maintained. Royal Enfield branded.

# TOURING DUAL SEAT

**DMS Ordering Part Number** - KXH00009/A

**Kit Number** - 1990403

**Material** - Embossed Vinyl

**Colour** - Black

**Compatible Platform/s** - Continental GT

**Fitting Time** - 10 mins



Increased seat comfort for both rider and passenger from the addition of 3D netting. Rider standover height is maintained. Royal Enfield branded.



# SINGLE SEAT, RIDER

**DMS Ordering Part Number** - 1770009/B

**Kit Number** - 1990426

**Material** - Embossed Vinyl

**Colour** - Black

**Compatible Platform/s** - Continental GT

**Fitting Time** - 10 mins

**Note:** Seat Cowl, Single, Black Magic 1990425  
Seat Cowl, Single, Ice Queen 1990430  
Seat Cowl, Single, Venura Blue 1990431



Replaces OE seat to give the ultimate single seat cafe racer look. Fitment with matching coloured seat cowl (sold separately)

# TOURING SEAT, RIDER

**DMS Ordering Part Number** - 1770019/A

**Kit Number** - 1990605

**Material** - Embossed Vinyl

**Colour** - Black

**Compatible Platform/s** - Classic 350, Classic 500

**Fitting Time** - 10 mins



Rider seat designed to give increased seat comfort from the addition of 3D netting while maintaining the same standover height. Has subtle Royal Enfield branding.

# TOURING SEAT, PASSENGER

**DMS Ordering Part Number** - 1770020/A

**Kit Number** - 1990607

**Material** - Embossed Vinyl

**Colour** - Black

**Compatible Platform/s** - Classic 350, Classic 500

**Fitting Time** - 10 mins



Passenger seat designed to give increased seat comfort from the addition of 3D netting while maintaining the same standover height. Has subtle Royal Enfield branding.

# TOURING DUAL SEAT

**DMS Ordering Part Number** – KXH00005/A

**Kit Number** – 1990606

**Material** – Embossed Vinyl

**Colour** – Black

**Compatible Platform/s** – Bullet 350, Bullet 500, Electra 350

**Fitting Time** – 10 mins



Increased seat comfort for both rider and passenger with the addition of 3d netting. Rider standover height is maintained. Royal Enfield branded.

# TOURING SEAT, RIDER

**DMS Ordering Part Number** - KXH00007/A

**Kit Number** - 1990208

**Material** - Embossed Vinyl

**Colour** - Grey

**Compatible Platform/s** - Himalayan (All)

**Fitting Time** - 10 mins



Increased seat comfort from the addition of 3D netting maintains the same standover height and comes with subtle Royal Enfield branding.

# TOURING SEAT, PASSENGER

**DMS Ordering Part Number** - KXH00008/A

**Kit Number** - 1990209

**Material** - Embossed Vinyl

**Colour** - Grey

**Compatible Platform/s** - Himalayan (All)

**Fitting Time** - 10 mins



Increased passenger comfort from the addition of 3D netting comes with subtle Royal Enfield branding.

# BODYWORK

TN07CM2480

# RSU FINISHER KIT

DMS Ordering Part Number - 1720067/B

Kit Number - 1990445

Material - Aluminium

Colour - Black

Compatible Platform/s - Interceptor and Continental GT

Fitting Time - 10 mins

Note: Not compatible with the following products:

1990411 Pannier Mounting Kit

990439 Pannier Mount, RH, Black

center stand lifting handle must be removed to  
allow fitment on the interceptor



Machined RSU finisher kit. Black finish.  
Royal Enfield branded.



# BAR END FINISHER KIT, MACHINED

DMS Ordering Part Number - 1760093/A

Kit Number - 1990220

Material - Aluminium

Colour - Black

Compatible Platform/s - Himalayan (All)

Fitting Time - 10 mins

Note: Fitment to aluminium handlebars  
(Parts Number - 1990206) only.



CNC Machined bar end weights with laser - etched branding.

# HEEL GUARD, RH

DMS Ordering Part Number - 1720071/C

Kit Number - 1990444

Material - Stainless Steel

Colour - Black

Compatible Platform/s - Interceptor

Fitting Time - 5 mins



Heel Guard, black powder coated.

# BAR END FINISHER KIT, MACHINED

DMS Ordering Part Number - 1720058/B

Kit Number - 1990441

Material - Aluminium

Colour - Black

Compatible Platform/s - Interceptor and Continental GT

Fitting Time - 10 mins



Machined handlebar end weights. Black finish.  
Royal Enfield branded.

# BAR END FINISHER KIT, MACHINED

DMS Ordering Part Number - 1720054/B

Kit Number - 1990457

Material - Aluminium

Colour - Silver

Compatible Platform/s - Interceptor and Continental GT

Fitting Time - 10 mins



Machined handlebar end weights. Silver finish.  
Royal Enfield branded.

# MACHINED FRONT RESERVOIR CAP

**DMS Ordering Part Number** - 1720032/E

**Kit Number** - 1990650

**Material** - Aluminium

**Colour** - Black

**Compatible Platform/s** - Classic 350 and 500, Bullet 350 and 500, Electra 350, Himalayan, Interceptor, Continental GT, Trials 500

**Fitting Time** - 10 mins



Machined front master cylinder cap. Black anodized finish.  
Royal Enfield branded.

# MACHINED FRONT RESERVOIR CAP

**DMS Ordering Part Number** - 1720033/D

**Kit Number** - 1990651

**Material** - Aluminium

**Colour** - Silver

**Compatible Platform/s** - Classic 350 and 500, Bullet 350 and 500, Electra 350, Himalayan, Interceptor, Continental GT, Trials 500

**Fitting Time** - 10 mins



Machined front master cylinder cap. Silver anodized finish.  
Royal Enfield branded.

# MACHINED FRONT RESERVOIR CAP

**DMS Ordering Part Number** - 1720034/D

**Kit Number** - 1990652

**Material** - Aluminium

**Colour** - Black

**Compatible Platform/s** - Classic 350 and 500, Bullet 350 and 500, Electra 350, Himalayan, Interceptor, Continental GT, Trials 500

**Fitting Time** - 10 mins



Machined front master cylinder cap. Black anodized finish.  
Royal Enfield branded.

# MACHINED FRONT RESERVOIR CAP

**DMS Ordering Part Number** - 1720035/D

**Kit Number** - 1990653

**Material** - Aluminium

**Colour** - Silver

**Compatible Platform/s** - Classic 350 and 500, Bullet 350 and 500, Electra 350, Himalayan, Interceptor, Continental GT, Trials 500

**Fitting Time** - 10 mins



Machined front master cylinder cap. Silver anodized finish.  
Royal Enfield branded.



# TALL TINTED FLYSCREEN

**DMS Ordering Part Number** - 1710010/B

**Kit Number** - 1990414

**Material** - High Impact Acrylic

**Colour** - Tinted

**Compatible Platform/s** - Interceptor and Continental GT

**Fitting Time** - 45 mins



Injection molded Touring screen that provides increased wind protection.  
Royal Enfield branded.

# SHORT TINTED FLYSCREEN

**DMS Ordering Part Number** - 1710008/B

**Kit Number** - 1990413

**Material** - High Impact Acrylic

**Colour** - Tinted

**Compatible Platform/s** - Interceptor and Continental GT

**Fitting Time** - 45 mins



Injection molded Fly screen that provides increased wind protection.  
Royal Enfield branded.

# HEADLIGHT VISOR, STAINLESS STEEL

**DMS Ordering Part Number** - KXB00012/C

**Kit Number** - 1990625

**Material** - Stainless Steel

**Colour** - Silver

**Compatible Platform/s** - Classic 500, Bullet 500

**Fitting Time** - 20 mins



Highly polished branded stainless steel headlight visor. Royal Enfield branding.

# SINGLE SEAT COWL, BLACK MAGIC

**DMS Ordering Part Number** - KXH00011/A

**Kit Number** - 1990425

**Material** - Injection Molded ABS

**Colour** - Black

**Compatible Platform/s** - Continental GT

**Fitting Time** - 5 mins



Painted Seat Cowl, colour co-ordinated to provide that classic cafe racer image. For fitment to the Seat Rider Only (Part Number 1990426)

# SINGLE SEAT COWL, ICE QUEEN

**DMS Ordering Part Number** – KXH00012/A

**Kit Number** – 1990430

**Material** – Injection Molded ABS

**Colour** – White

**Compatible Platform/s** – Continental GT

**Fitting Time** – 5 mins



Painted Seat Cowl, colour co-ordinated to provide that classic cafe racer image. For fitment to the Seat Rider Only (Part Number 1990426)

# SINGLE SEAT COWL, VENTURA BLUE

**DMS Ordering Part Number** - KXH00013/A

**Kit Number** - 1990431

**Material** - Injection Molded ABS

**Colour** - Blue

**Compatible Platform/s** - Continental GT

**Fitting Time** - 5 mins



Painted Seat Cowl, colour co-ordinated to provide that classic cafe racer image. For fitment to the Seat Rider Only (Part Number 1990426)

# HEEL GUARD, PAIR

**DMS Ordering Part Number** - 1720066/C

**Kit Number** - 1990443

**Material** - Stainless Steel

**Colour** - Black

**Compatible Platform/s** - Continental GT

**Fitting Time** - 10 mins



Heel Guards, black powder coated.

# NUMBER BOARD, LH

**DMS Ordering Part Number** – KXB00010/B

**Kit Number** – 1990674

**Material** – ABS

**Colour** – Black

**Compatible Platform/s** – Classic 350, Classic 500,  
Electra 350, Bullet 350, Bullet 500,  
Trials 500

**Fitting Time** – 10 mins



Black injection moulded number board for fitting to the left hand side of the bike.  
Includes sized number 48. Royal Enfield Branded.



# DUAL SEAT COWL, VENTURA BLUE

**DMS Ordering Part Number** - 1770040/E

**Kit Number** - 1990435

**Material** - Injection Molded ABS

**Colour** - Blue

**Compatible Platform/s** - Continental GT

**Fitting Time** - 5 mins



Painted Seat Cowl, colour co-ordinated to provide that classic cafe racer image.  
For fitment to the original seat or Touring dual seat.

# DUAL SEAT COWL, BLACK MAGIC

DMS Ordering Part Number - 1720039/E

Kit Number - 1990434

Material - Injection Molded ABS

Colour - Black

Compatible Platform/s - Continental GT

Fitting Time - 5 mins



Painted Seat Cowl, colour co-ordinated to provide that classic cafe racer image.  
For fitment to the original seat or Touring dual seat.

# DUAL SEAT COWL, ICE QUEEN

**DMS Ordering Part Number** - 1770038/E

**Kit Number** - 1990433

**Material** - Injection Molded ABS

**Colour** - White

**Compatible Platform/s** - Continental GT

**Fitting Time** - 5 mins



Painted Seat Cowl, colour co-ordinated to provide that classic cafe racer image.  
For fitment to the original seat or Touring dual seat.

A close-up photograph of a complex mechanical assembly, likely a control system for a vehicle or industrial machine. The image shows various metal components, including a central shaft with a textured section marked with '+2', several bolts, and a circular component with a gear-like pattern. The word 'CONTROLS' is overlaid in large, bold, white capital letters across the center of the image.

# CONTROLS

# BAR END MIRROR KIT, HOMOLOGATED

DMS Ordering Part Number - 1720005/A

Kit Number - 1990401

Material - Aluminium

Colour - Black

Compatible Platform/s - Continental GT

Fitting Time - 20 mins



Fully homologated replacement mirrors with improved stability.  
Royal Enfield branded.

# TOURING MIRROR KIT, HOMOLOGATED

DMS Ordering Part Number - KXC00021/A

Kit Number - 1990454

Material - Aluminium

Colour - Black

Compatible Platform/s - Interceptor and Continental GT

Fitting Time - 20 mins



Fully homologated replacement mirrors with improved stability.  
Royal Enfield branded.

# HANDLEBAR BRACE PAD

**DMS Ordering Part Number** - 1720021/C

**Kit Number** - 1990402

**Material** - Embossed Vinyl

**Colour** - Black

**Compatible Platform/s** - Interceptor

**Fitting Time** - 5 mins



Provides protection while enhancing the look.  
Royal Enfield branded.

# BRACED HANDLEBAR KIT

DMS Ordering Part Number - 1041304

Kit Number - 1990206

Material - Aluminium

Colour - Black

Compatible Platform/s - Himalayan (All)

Fitting Time - 30 mins



Thick walled aluminium bars, anodised and ergonomically formed from 6061 T6 Alloy. Steel crossbar adds strength and 'Enduro' look with laser-etched Royal Enfield branding.



# HAND GUARD KIT

**DMS Ordering Part Number** - 1760135/H

**Kit Number** - 1990211

**Material** - Aluminium, Fibre Reinforced Nylon

**Colour** - Black

**Compatible Platform/s** - Classic 350 and 500,  
Bullet 350 and 500, Electra 350,  
Himalayan

**Fitting Time** - 20 mins



Robust injection molded handguard kit. Provides additional protection from environment and helps to protect levers in the event of a fall. Only fits to original handlebars.

# HANDLEBAR BRACE PAD

**DMS Ordering Part Number** - KXC00027/A

**Kit Number** - 1990707

**Material** - Embossed Vinyl

**Colour** - Black

**Compatible Platform/s** - Trials 500

**Fitting Time** - 5 mins



Provides protection while enhancing the Trials look.



# SECURITY AND MAINTENANCE

# MACHINED SWINGARM BOBBIN KIT

DMS Ordering Part Number - 1760109/C

Kit Number - 1990415

Material - Aluminium

Colour - Black

Compatible Platform/s - Interceptor and Continental GT

Fitting Time - 10 mins



Enables use of paddock stands. Royal Enfield Branding.

# WATER RESISTANT BIKE COVER

DMS Ordering Part Number - 1780003/C

Kit Number - 1990642

Material - 100% Polyester

Colour - Black

Compatible Platform/s - All



Water resistant Royal Enfield branded cover protects your motorcycle from dust, sun and rain. Elasticated bottom ensures a snug fit.

# WATER RESISTANT BIKE COVER

DMS Ordering Part Number - 1780001/C

Kit Number - 1990643

Material - 100% Polyester

Colour - Navy

Compatible Platform/s - All



Water resistant Royal Enfield branded cover protects your motorcycle from dust, sun and rain. Elasticated bottom ensures a snug fit.



**ENGINE**

TWINSPARK  
350

# INTAKE COVER KIT

**DMS Ordering Part Number** - 1740019/D

**Kit Number** - 1990442

**Material** - Stainless Steel

**Colour** - Black

**Compatible Platform/s** - Interceptor and Continental GT

**Fitting Time** - 10 mins



EFI Side covers, black powder coated.



# OIL FILLER CAP, MACHINED

**DMS Ordering Part Number** - 1740010/E

**Kit Number** - 1990218

**Material** - Aluminium

**Colour** - Black

**Compatible Platform/s** - Interceptor, Continental GT and  
Himalayan

**Fitting Time** - 5 mins



Machined oil filler cap. Black anodised finish.  
Royal Enfield branded.

# OIL FILLER CAP, MACHINED

**DMS Ordering Part Number** - 1740014/E

**Kit Number** - 1990236

**Material** - Aluminium

**Colour** - Silver

**Compatible Platform/s** - Interceptor, Continental GT and  
Himalayan

**Fitting Time** - 5 mins



Machined oil filler cap. Silver anodised finish.  
Royal Enfield branded.

# MACHINED OIL FILLER CAP, BLACK

DMS Ordering Part Number - 1740003/D

Kit Number - 1990645

Material - Aluminium

Colour - Black

Compatible Platform/s - Classic 500, Bullet 500

Fitting Time - 5 mins



Don't you love the details? This oil filler cap is machined from billet aluminium and has a separate branded infill to be fitted last, thus keeping the Royal Enfield logo always positioned as intended. Also available in silver.

# MACHINED OIL FILLER CAP, SILVER

DMS Ordering Part Number - 1740001/C

Kit Number - 1990613

Material - Aluminium

Colour - Silver

Compatible Platform/s - Classic 500, Bullet 500

Fitting Time - 5 mins



Don't you love the details? This oil filler cap is machined from billet aluminium and has a separate branded infill to be fitted last, thus keeping the Royal Enfield logo always positioned as intended. Also available in silver.

# MACHINED TAPPET COVER, RE, BLACK

DMS Ordering Part Number - 1740012/D

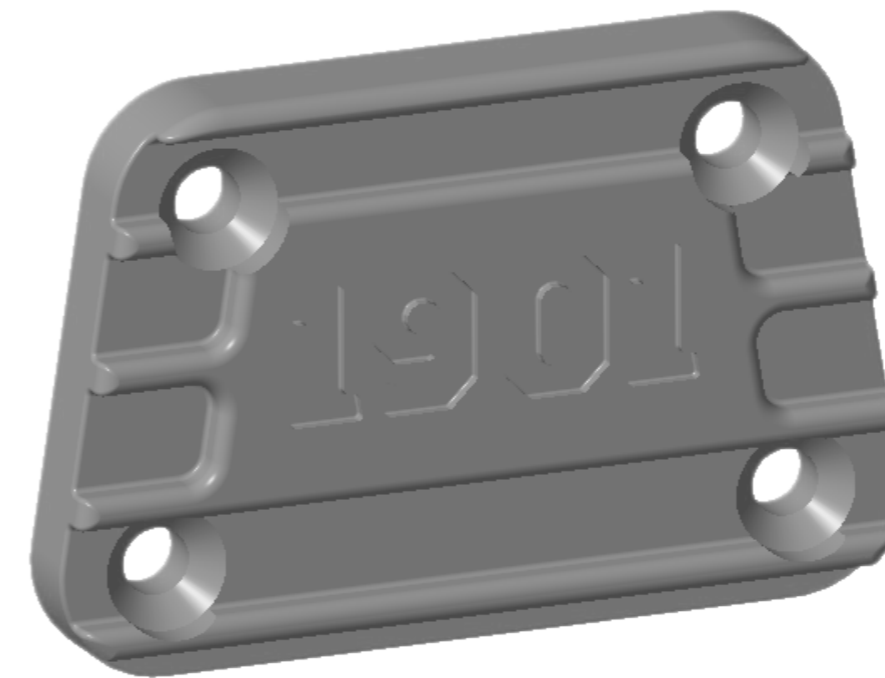
Kit Number - 1990615

Material - Aluminium

Colour - Black

Compatible Platform/s - Classic 350, Classic 500, Bullet 350,  
Bullet 500, Electra 350, Trials 500

Fitting Time - 5 mins



Machined aluminium inspection cover. Anodised finish with subtle 1901 branding.

# MACHINED TAPPET COVER, RE, SILVER

DMS Ordering Part Number - 1740013/C

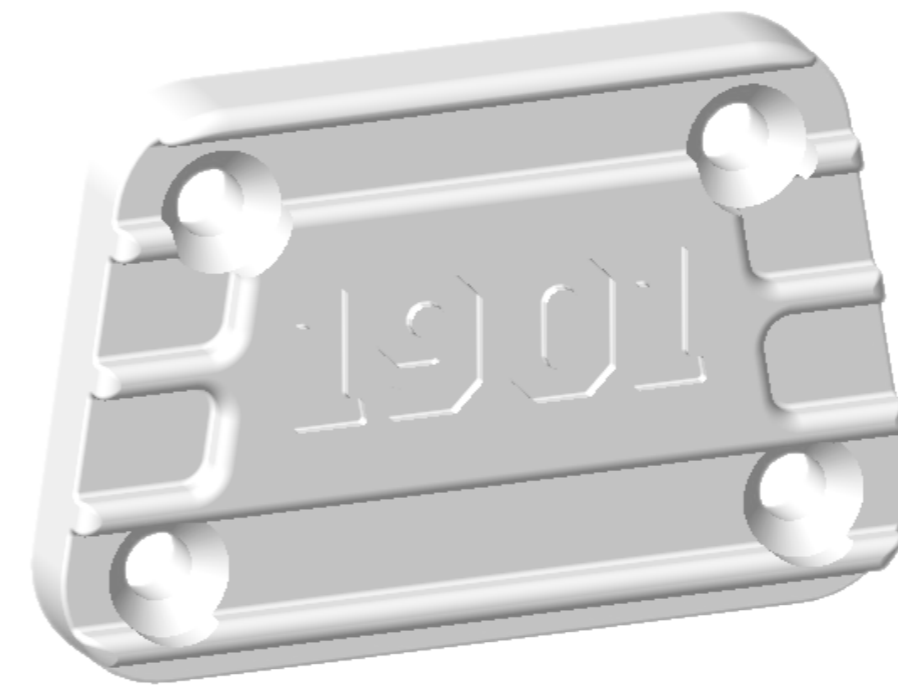
Kit Number - 1990616

Material - Aluminium

Colour - Silver

Compatible Platform/s - Classic 350, Classic 500, Bullet 350,  
Bullet 500, Electra 350, Trials 500

Fitting Time - 5 mins



Machined aluminium inspection cover. Anodised finish with subtle 1901 branding.



# LUGGAGE

TN07  
CK 3868

# MILITARY PANNIER PAIR

DMS Ordering Part Number - 1990618/A

Kit Number - 1990618

Material - Wax Canvas

Colour - Olive Green

Compatible Platform/s - Classic 350, Classic 500



Heavy-duty water resistant Military Canvas bags. Quick release straps for swift removal. Royal Enfield branded. Mounting rails are available separately. Pannier Mounts - Pair, Fabricated - Disc: 1990670



# MILITARY PANNIER PAIR

DMS Ordering Part Number - 1990619/A

Kit Number - 1990619

Material - Wax Canvas

Colour - Black

Compatible Platform/s - Classic 350, Classic 500



Heavy-duty water resistant Military Canvas bags. Quick release straps for swift removal. Royal Enfield branded. Mounting rails are available separately. Pannier Mounts - Pair, Fabricated - Disc: 1990670

# PANNIER MOUNTING KIT, DISC

DMS Ordering Part Number - 1750109/B

Kit Number - 1990670

Material - Mild Steel

Colour - Black

Compatible Platform/s - Classic 350, Classic 500

Note: For fitment to DISC variants only.



Manufactured from 16mm diameter mild steel tubing. Black powder coated to give a durable, corrosion resistant finish. Panniers are available separately. Pannier, Military Pair in wax canvas - Olive Green: 1990618, Black: 1990619

# MILITARY PANNIER, RH

**DMS Ordering Part Number** - 1750082/B

**Kit Number** - 1990654

**Material** - Wax Canvas

**Colour** - Olive Green

**Compatible Platform/s** - Classic 350, Classic 500



Single heavy-duty water resistant Military Canvas bag. Quick release straps for swift removal. Royal Enfield branded. Mounting rail is available separately. Pannier Mount, RH Fabricated - Disc: 1990671

# MILITARY PANNIER, RH

DMS Ordering Part Number - 1750083/B

Kit Number - 1990655

Material - Wax Canvas

Colour - Black

Compatible Platform/s - Classic 350, Classic 500



Single heavy-duty water resistant Military Canvas bag. Quick release straps for swift removal. Royal Enfield branded. Mounting rail is available separately. Pannier Mount, RH Fabricated - Disc: 1990671

# PANNIER MOUNTING KIT (DISC)

DMS Ordering Part Number - KXF00016/A

Kit Number - 1990671

Material - Mild Steel

Colour - Black

Compatible Platform/s - Classic 350, Classic 500

Note: For fitment to DISC variants only.



Manufactured from 16mm diameter mild steel tubing.  
Black powder coated to give a durable, corrosion resistant finish.  
Pannier is available separately: Olive Green: 1990654, Black: 1990655

# LUGGAGE RACK, REAR

DMS Ordering Part Number - 1750070/B

Kit Number - 1990631

Material - Mild Steel

Colour - Black

Compatible Platform/s - Classic 350, Classic 500,  
Trials 500

Fitting Time - 10 mins



Manufactured from 16mm diameter mild steel tubing. Black powder coated to give a durable, corrosion resistant finish. Royal Enfield branded.

# ALUMINIUM PANNIER, PAIR, 26L

**DMS Ordering Part Number** - 1750044/B

**Kit Number** - 1990200

**Material** - Aluminium

**Colour** - Silver

**Compatible Platform/s** - Himalayan (All)

**Fitting Time** - 10 mins



Rugged, water resistant aluminium box panniers constructed from 2mm aluminium plate with added ABS corner protection. 26 litre carrying capacity per pannier with secure lockable lid. Embossed with subtle Royal Enfield branding. A pair of mounting rails is available separately. Pannier Mounting Rails - 1990201.

# ALUMINIUM PANNIER, PAIR, 26L

**DMS Ordering Part Number** - 1750045

**Kit Number** - 1990230

**Material** - Aluminium

**Colour** - Black

**Compatible Platform/s** - Himalayan (All)

**Fitting Time** - 10 mins



Rugged, water resistant aluminium box panniers constructed from 2mm aluminium plate with added ABS corner protection. 26 litre carrying capacity per pannier with secure lockable lid. Embossed with subtle Royal Enfield branding. A pair of mounting rails is available separately. Pannier Mounting Rails - 1990201.



# PANNIER MOUNTING KIT

DMS Ordering Part Number - 1041284/C

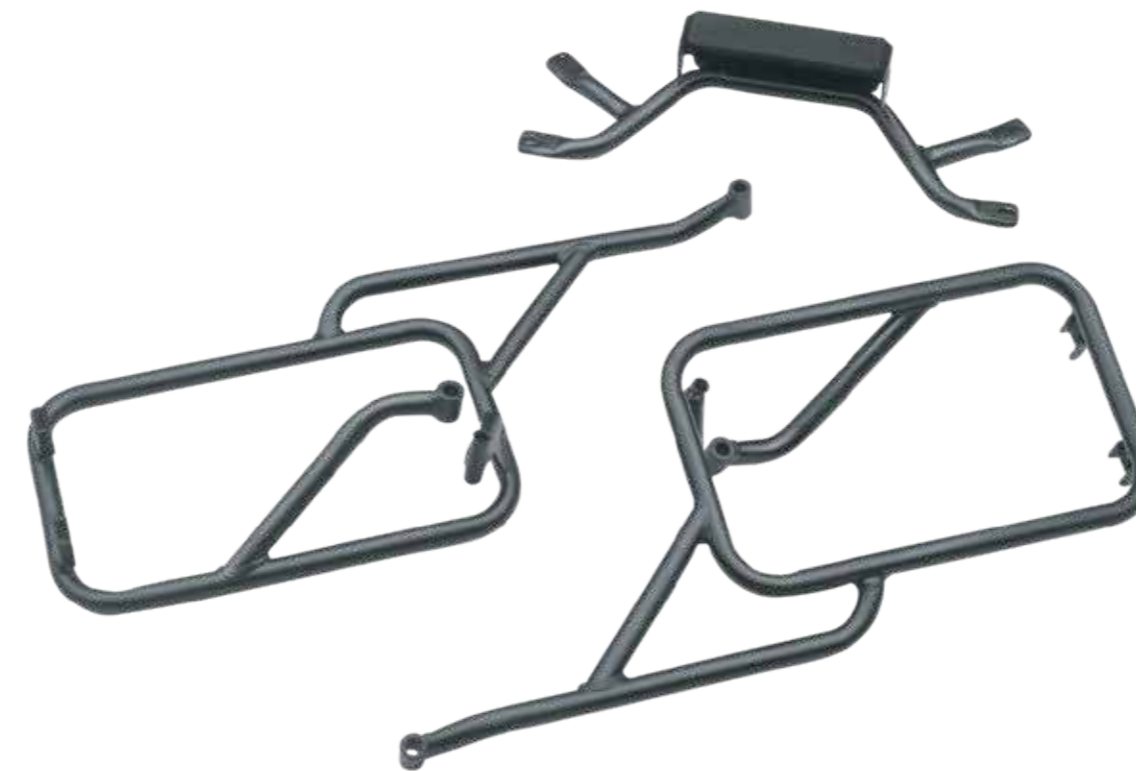
Kit Number - 1990201

Material - Mild Steel

Colour - Black

Compatible Platform/s - Himalayan (All)

Fitting Time - 60 mins



Manufactured from 18mm steel tubing. Black powder coated to give a durable, corrosion resistant finish. Has a provision to relocate rear numberplate and indicator lights ensuring that homologation is maintained. Panniers are available separately. Aluminium Panniers, 26 litre - Silver: 1990200, Black: 1990230

# INFORMATION

- Products shown may not be available in all markets.
- Images & specifications shown here may differ from the actual product

# NOTES

# ROYAL ENFIELD



For internal distribution in Europe only